

Planning
Committee Meeting

07 February 2023



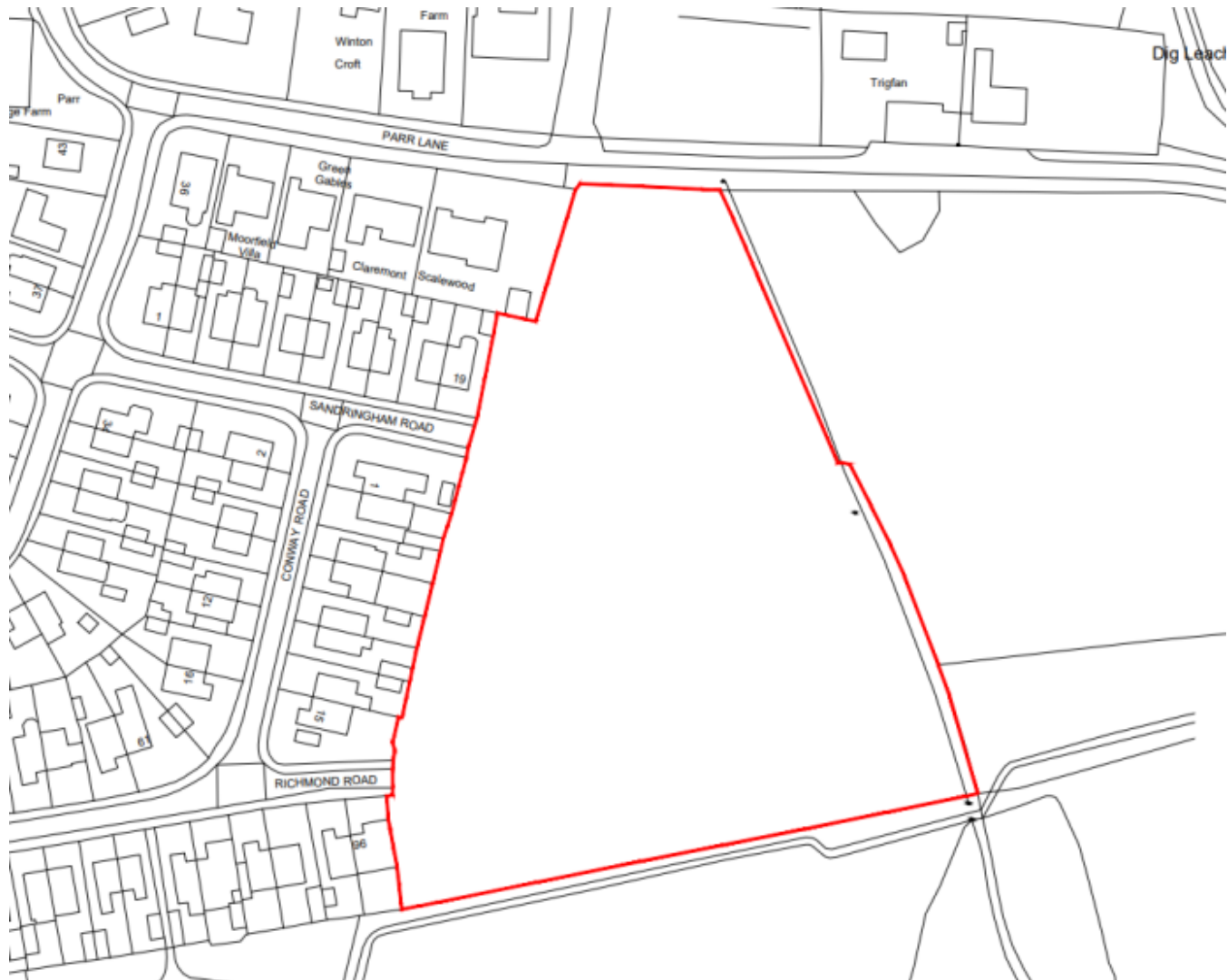
Item 3c

22/00869/REMAJ

Land South Of Parr Lane, Ecclestone

Reserved matters application detailing access, appearance, landscaping, layout and scale for the erection of 34 dwellings pursuant to outline planning permission ref: 20/01193/OUTMAJ (Up to 34 dwellings and associated infrastructure) Appeal ref: APP/D2320/W/21/3284702

Location plan



Aerial photo



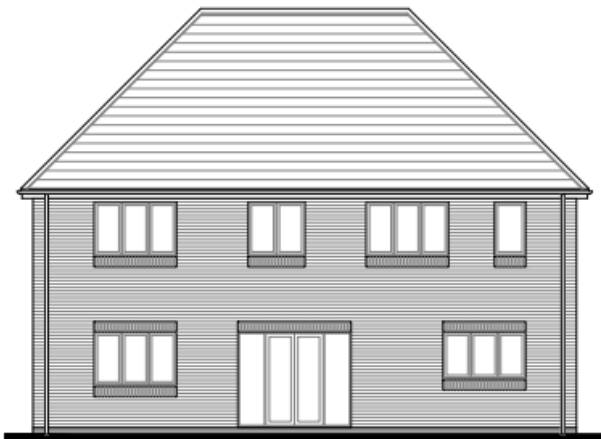
House type example



FRONT ELEVATION



SIDE ELEVATION



REAR ELEVATION



SIDE ELEVATION

House type example



FRONT ELEVATION



SIDE ELEVATION



REAR ELEVATION



SIDE ELEVATION

House type example

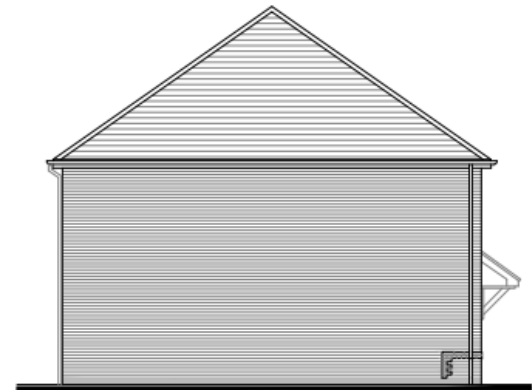


MOXLEY (AS)
FRONT ELEVATION

MOWSLEY (AS)

MOXLEY (OPP)

MOXLEY (OPP)



MOXLEY (AS)
SIDE ELEVATION

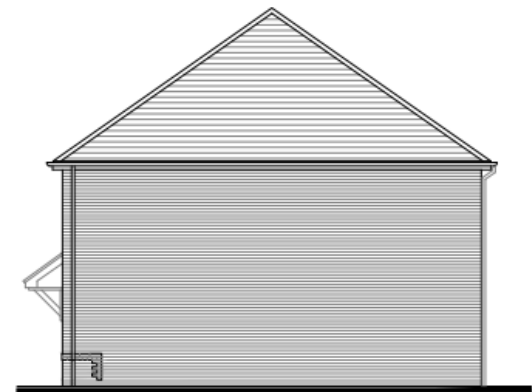


MOWSLEY (OPP)
REAR ELEVATION

MOXLEY (OPP)

MOXLEY (OPP)

MOWSLEY (AS)

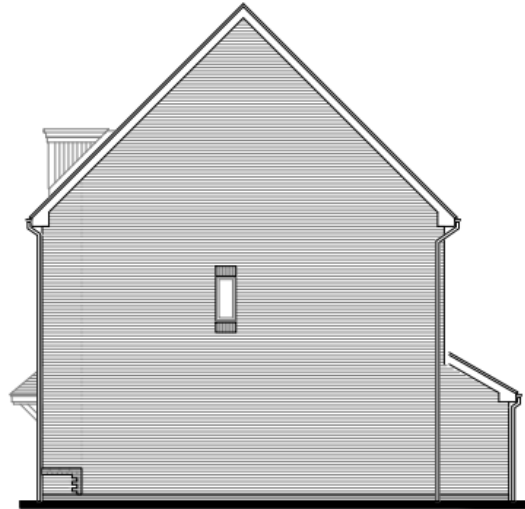


MOXLEY (OPP)
SIDE ELEVATION

House type example



FRONT ELEVATION



SIDE ELEVATION



REAR ELEVATION



SIDE ELEVATION

Site photo



Site photo



Parr Lane towards site



Views toward site entrance at Sandringham Road



View towards pedestrian access from Richmond Road

